

TSZ Type:

Single-phase TSZ Type encapsulated, toroidal transformers, manufactured and tested in compliance with EN 61558.

Designed and prepared for II class equipment. Suited for power supply circuitry of electric machines and electronic devices with low non-load losses and weight.

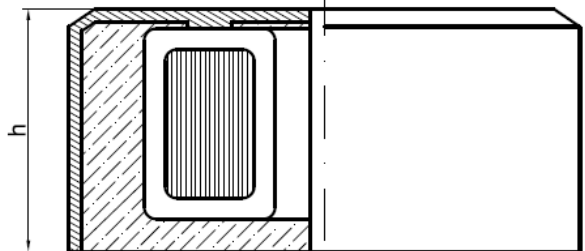
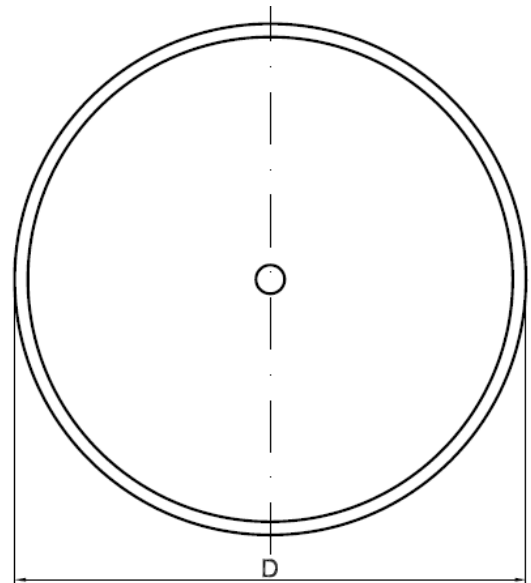
Transformers can be customized into several desired dimensions and voltage taps on both primary and secondary sides. Transformer can be also equipped with the following features:

- electrical and electromagnetic shield,
- thermal protection switch,
- plastic, metal and DIN rail mounting
- soft-start system,
- interior epoxy filling.

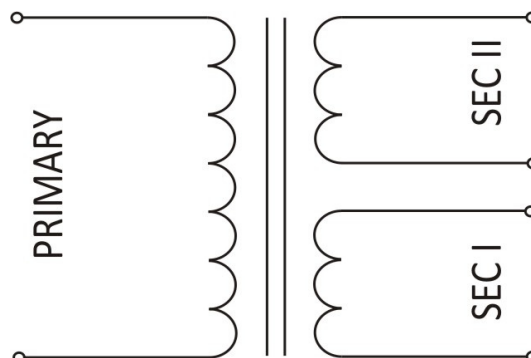
Technical specification:

Nominal Power: 20 - 600VA
 Input voltage: 1 - 500V
 Frequency: 50 - 60Hz
 Output voltage: 3 - 1000V (multiple taps)

Construction / Insulation class: II / B (130°C)
 Ambient temperature: 40°C
 Protection degree: up to IP-65
 Insulation voltage test: 4kVAC (RMS)



Wiring diagram:



example, double secondary transformer – can be used series or parallel connected.

Standard 115V or 230V primary models – one, two or multiple outputs

Type	Nominal Power [VA]	SECONDARY voltage(s) [VAC]	SECONDARY current [A]	Dimensions	
				diameter [D]	Height [h]
TSZ20VA	20	3 – 1000	0,01 – 6,7	95	45
TSZ30VA	30	3 – 1000	0,01 – 10	95	45
TSZ50VA	50	10 – 1000	0,01 – 5	95	45
TSZ60VA	60	10 – 1000	0,01 – 6	95	45
TSZ80VA	80	10 – 1000	0,01 – 8	105	56
TSZ100VA	100	10 – 1000	0,01 – 10	105	56
TSZ120VA	120	10 – 1000	0,01 – 12	105	56
TSZ150VA	150	10 – 1000	0,01 – 15	105	56
TSZ200VA	200	10 – 1000	0,01 – 20	115	56
TSZ250VA	250	10 – 1000	0,01 – 25	115	56
TSZ300VA	300	10 – 1000	0,01 – 30	138	55
TSZ400VA	400	10 – 1000	0,01 – 40	138	65
TSZ500VA	500	10 – 1000	0,01 – 50	147	70
TSZ600VA	600	10 – 1000	0,01 – 60	147	70

Get more informations about custom made non standard encapsulated transformers : info@toroidy.pl